

**PLANTING OBJECTIVES:**

1. Create dense or forest-like planting.
2. Address amenity and land-use compatibility between agricultural and residential uses.
3. Enhance the landscape.
4. Complement native trees in the Golf Links Road Reserve and create an environmental corridor
5. Require trees, shrubs and ground cover of different heights.

**NOTES:**

1. 80m wide vegetated buffer to be planted with suitable native species as a condition of subdivision approval.
2. Further details in the supporting supplementary landscape plan and report.
3. The vegetated buffer to be maintained by the subdivider for two summers and thereafter maintained by the landowners.
4. Driveways to be located to limit buffer gaps whilst reflecting Bushfire Management Plan requirements.

**LEGEND**

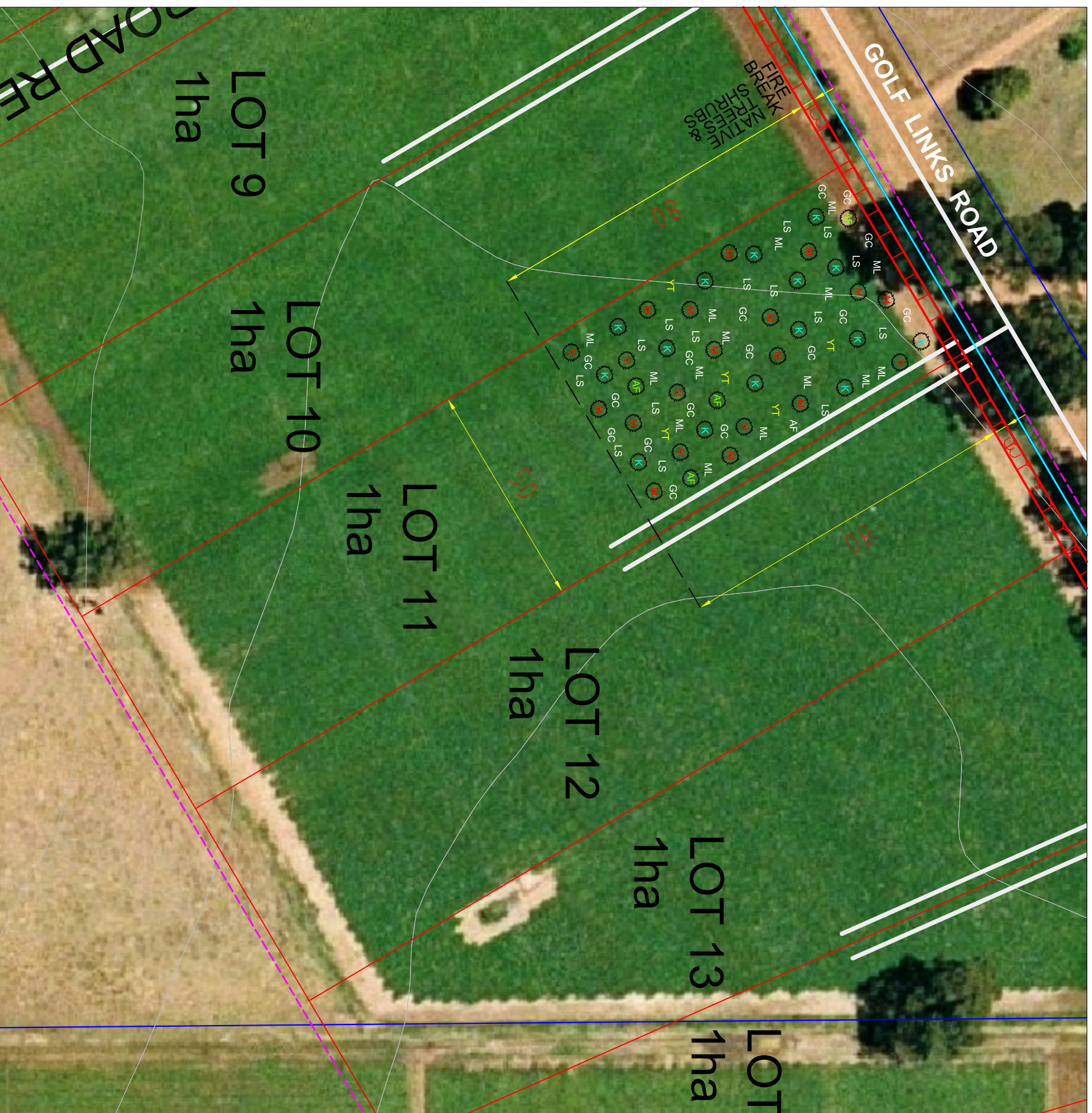
- Vegetated Buffer - Natives
- 3m firebreak from Golf Links Road
- 3m widening of Golf Links Road
- Extent of Landscape Plan
- Proposed Lot Boundaries
- Shared Driveways

**SPECIAL USE ZONE 7 LANDSCAPE PLAN**  
**LOT 1, 200, 201 and 801.**  
**GOLF LINKS ROAD, PEMBERTON**  
**SHIRE OF MANJIMUP**

SCALE APPROX. 1:4000  
 DATE 09 JULY 2020



**R.D. LAKE LIN**  
 POTLICK WA/ASSE WA 6250  
 08-26 434 306  
 r.lakelin@rdlakelin.com



**SPECIAL USE ZONE 7  
SUPPLEMENTARY LANDSCAPE PLAN  
LOT 1, 200, 201 and 801.  
GOLF LINKS ROAD, PEMBERTON  
SHIRE OF MANJIMUP**

LEGEND	
	Extent of Landscape Plan
	Proposed Lot Boundaries
	Shared Driveways
	3m widening of Golf Links Road
	3m Firebreak from Golf Links Road

- PLANTING OBJECTIVES:**
1. Create dense or forest-like planting.
  2. Address amenity and land-use compatibility between agricultural and residential uses.
  3. Enhance the landscape.
  4. Complement native trees in the Golf Links Road Reserve and create an environmental corridor
  5. Require trees, shrubs and ground cover of different heights.

**NATIVE TREE SHRUB & PLANT LIST**

Species	Common Name	Height(m)
---------	-------------	-----------

Trees (<5m)		
Eucalyptus diversicolor	Kari	76
Corymbia calophylla	Mari	42
Eucalyptus guilfoylei	Yellow Tingle	40
Agonis juniperina	Warren River Cedar	18
Agonis flexuosa	WA Peppermint	9
Mid Layer (1-5m)		
Bostseaia linophylla		2.5
Hovea elliptica	Painted lady	3
Gompholobium scabrum	Curtleaf hibertia	3
Hibertia cuneiformis		2
Pimaleia sylestris	Thick leaved fanflower	2
Scaevola crassifolia		1.5
Hypocalymma cordifolium		1.5
Melaleuca dicosminifolia		1.4
Conspersum teretifolium	Spider smokebush	1.5
Low Scrub (<1)		
Hovea trispenna	Common hovea	0.5
Paterosia occidentalis	Purple flags	0.7
Platysaca compressa	Tapeworm plant	0.6
Eryngium pinnatifidum	Blue devils	0.8
Nemcia reclusa		1
Templetonia reclusa	Cockles tongues	0.4
Goodenia scapigera	White goodenia	1
Scaevola callipera	Royal robe	0.4
Hemigenia sericea	Silky Hemigenia	1
Hibbertia stellaris	Orange stars	1
Platysaca compressa	Tapeworm plant	0.6
Ground covers		
Hardenbergia comptoniana	Native wisteria	
Kennedia lateritia		
Kennedia prostrata		
Palaemonium littorale		
Lachenaulia tubiflora	Heath lachenaulia	
Plant selection:		
<b>Plant Types</b>	<b>Code</b>	<b>Plans/Lot</b>
Trees-Kari	K	15
Trees-Mari	M	20
Trees-Yellow Tingle	YT	5
Trees-WA Peppermint	AF	4
Mid Layer Plants	ML	15
Low Scrub Plants	LS	15
Ground Cover	GC	16

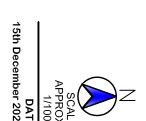
Planting shall be carried out by a qualified Horticulturist.

The Horticulturist shall determine from an examination of site conditions, what preparation and planting procedures to follow.

The planting shall be carried out in winter or early spring.

Plants shall be supplied in tubes or 70mm pots.

Subject to availability, a range of alternative plant species can be used subject to meeting the planting objectives and minimum planting numbers and density.



**R.D. LAKE LIN**  
P.O. BOX 79, VASSER, WA 6260  
04-22 434 306  
rd.lakelin@edgepond.com